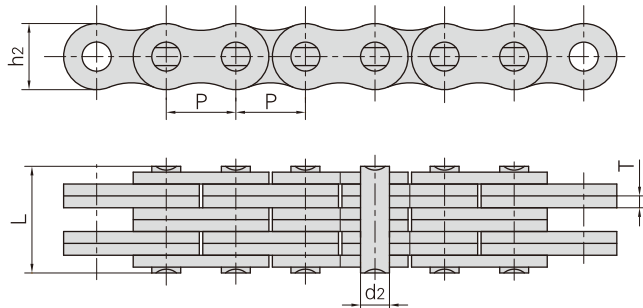
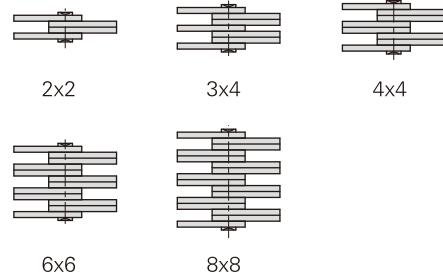


# Flyerketten



Laschenanordnung



JIS Ketten Nr.	Teilung	Laschenanordnung	Laschenhöhe	Laschenstärke	Bolzendurchmesser	Bolzenlänge	Bruchkraft	Durchschnittliche Bruchkraft	Gewicht pro Meter							
	P									h <sub>2</sub> max	T max	d <sub>2</sub> max	L max	Q min	Q <sub>0</sub>	q
	mm									mm	mm	mm	mm	kN/lbf	kN	kg/m
AL322	9.525	2 × 2	7.7	1.30	3.58	6.80	9.0/2045	10.2	0.23							
AL344		4 × 4				11.60	18.0/4090	20.0	0.46							
AL422	12.700	2 × 2	10.4	1.50	3.96	8.30	14.7/3304	16.9	0.39							
AL444		4 × 4				14.40	29.4/6609	35.2	0.74							
AL466		6 × 6				20.50	44.0/9891	52.7	1.13							
AL522	15.875	2 × 2	12.8	2.03	5.08	11.05	24.5/5508	28.6	0.64							
AL534		3 × 4				17.00	36.8/8273	46.0	1.10							
AL544		4 × 4				19.40	48.9/10993	62.4	1.25							
AL566		6 × 6				27.50	73.4/16500	93.8	1.79							
AL622	19.050	2 × 2	15.6	2.42	5.94	13.00	33.4/7508	44.4	0.87							
AL644		4 × 4				22.70	66.7/14994	78.8	1.70							
AL666		6 × 6				32.20	100.1/22502	118.6	2.53							
AL688		8 × 8				42.20	133.4/29988	156.6	3.37							
AL822	25.400	2 × 2	20.8	3.25	7.92	16.20	57.9/13016	68.6	1.57							
AL844		4 × 4				29.40	115.7/26009	135.6	3.08							
AL866		6 × 6				44.20	173.5/39003	202.3	4.62							
AL888		8 × 8				55.50	231.4/52019	245.0	6.12							
AL1022	31.750	2 × 2	25.6	4.00	9.53	19.60	84.5/18996	107.1	2.51							
AL1044		4 × 4				36.40	169.0/37991	203.6	4.95							
AL1066		6 × 6				52.30	253.5/56987	315.3	7.39							
AL1088		8 × 8				68.50	338.0/75982	421.2	9.83							
AL1222	38.100	2 × 2	30.5	4.80	11.10	24.30	120.1/26998	151.1	3.65							
AL1244		4 × 4				43.80	240.2/53997	299.7	7.05							
AL1266		6 × 6				63.20	360.3/80995	426.3	10.50							
AL1288		8 × 8				82.60	480.4/107994	568.4	14.03							
AL1444	44.450	4 × 4	36.4	5.60	12.70	51.30	302.5/68002	413.6	9.80							
AL1466		6 × 6				74.50	453.7/101992	620.4	14.66							
AL1644	50.800	4 × 4	41.6	6.40	14.21	58.00	382.5/85986	522.8	12.90							
AL1666		6 × 6				83.80	573.8/128990	783.6	19.27							
AL1688		8 × 8				109.50	765.0/171972	1045.5	25.64							