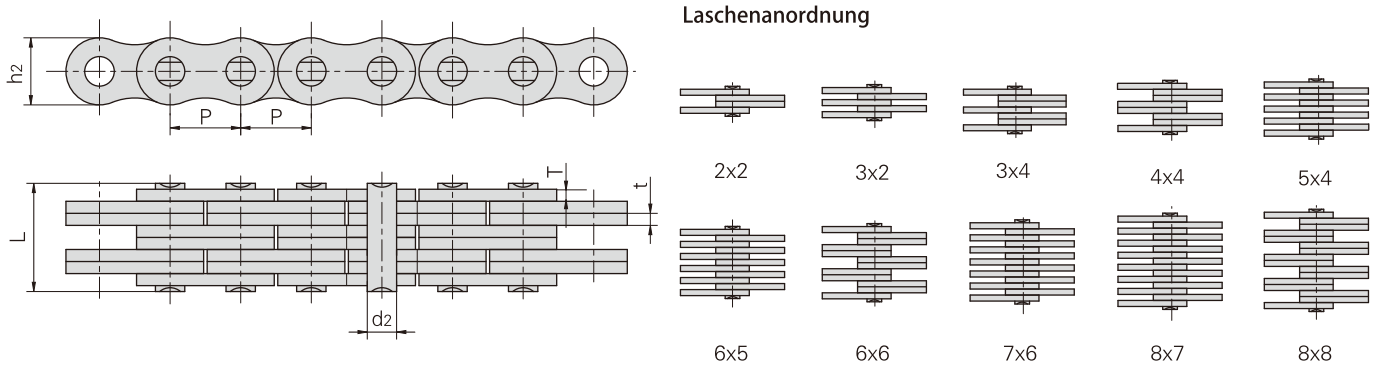


Flyerketten

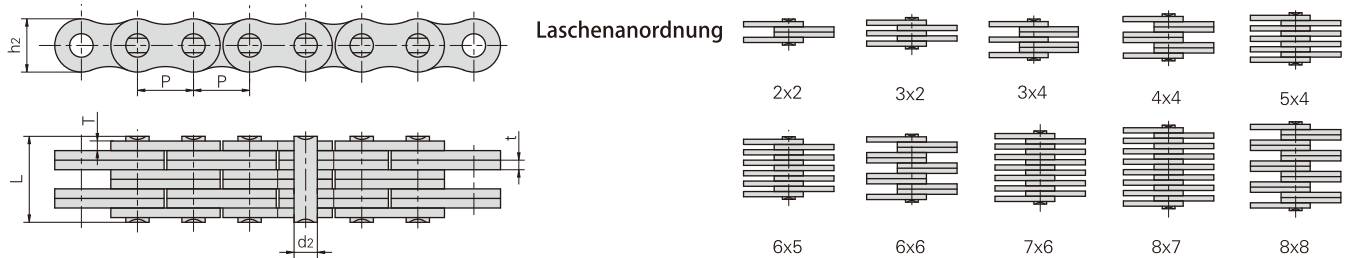


Donghua Ketten Nr.	Teilung	Laschenanordnung	Laschenhöhe	Laschendicke	Bolzendurchmesser	Bolzenlänge	Bruchkraft	Durchschnittliche Bruchkraft	Gewicht pro Meter
	P		h ₂ max	t/T max	d ₂ max	L max	Q min	Q ₀	q
	mm		mm	mm	mm	mm	kN/lbf	kN	kg/m
FL644	5.940	4 × 4	4.7	0.60	1.85	6.2	6.50/1477	7.8	0.13
FL666		6 × 6				9.3	9.75/2216	11.8	0.20
FL688		8 × 8				12.0	13.00/2955	15.6	0.25
FL523	8.000	3 × 2	6.3	1.00	2.31	6.7	7.00/1575	7.4	0.18
*FL523F1	8.000	3 × 2	6.3	1.30/1.00	2.31	6.3	7.00/1575	7.4	0.25
*FL523F3	8.000	3 × 2	7.6	1.30/1.04	3.10	8.0	7.00/1575	8.0	0.33
*FL523F4	8.000	3 × 2	7.6	1.30/1.04	2.31	7.6	7.00/1576	8.0	0.32
FL844	8.000	4 × 4	6.9	0.73	2.31	7.9	10.00/2273	12.1	0.25
*FL823F1	8.000	3 × 2	7.6	1.30/1.04	3.15	7.8	11.00/2472	11.8	0.32
FL922	9.525	2 × 2	8.7	1.04	3.28	6.2	10.00/2273	12.1	0.22
FL944		4 × 4				10.4	21.00/4724	24.7	0.43
FL945		4 × 5				11.5	21.00/4724	23.0	0.50
FL956		6 × 5				14.0	25.50/5732	28.0	0.60
FL966		6 × 6				14.9	31.00/7045	36.8	0.65
FL988		8 × 8				19.0	42.00/9450	46.2	0.87
FL966F3		6 × 6				16.2	33.10/7441	36.5	0.75
FL922F4	9.525	2 × 2	8.5	1.60	3.90	8.6	12.50/2810	13.8	0.37
LF10	10.000	3 × 3	7.5	1.20	3.20	10.6	14.00/3150	15.5	0.39
LF1234	12.000	4 × 3	10.0	2.03	3.96	17.6	15.45/3476	17.0	0.85
LF1246	12.000	△6 × 4	10.8	1.60	5.08	18.7	30.00/6748	33.0	1.05
F1266F1	12.700	△6 × 6	9.0	1.60	3.70	21.6	45.00/10123	50.0	0.92
F122	12.700	2 × 2	8.2	1.00	3.58	7.0	11.43/2598	13.6	0.19
F1223	12.700	3 × 2	10.2	2.03	4.45	12.8	20.00/4545	23.8	0.61
FL1244	12.700	4 × 4	10.2	1.70	4.45	16.7	44.00/10000	52.3	0.83
F1023	15.875	3 × 2	14.3	2.42	4.75	15.9	25.00/5625	27.5	1.11
FLC534	15.875	3 × 4	12.7	1.85	5.08	15.3	40.40/9181	44.4	0.99
FLC545		5 × 4				19.2	54.30/12340	59.7	1.27
FLC556		6 × 5				22.7	67.60/15363	74.3	1.54
FLC567		7 × 6				26.8	80.80/18176	89.0	1.82

Anmerkungen: * Bedeutet gerade Verbindungsplatte

△ Bedeutet spezielle Verbindungsplatten-Kombination

Flyerketten

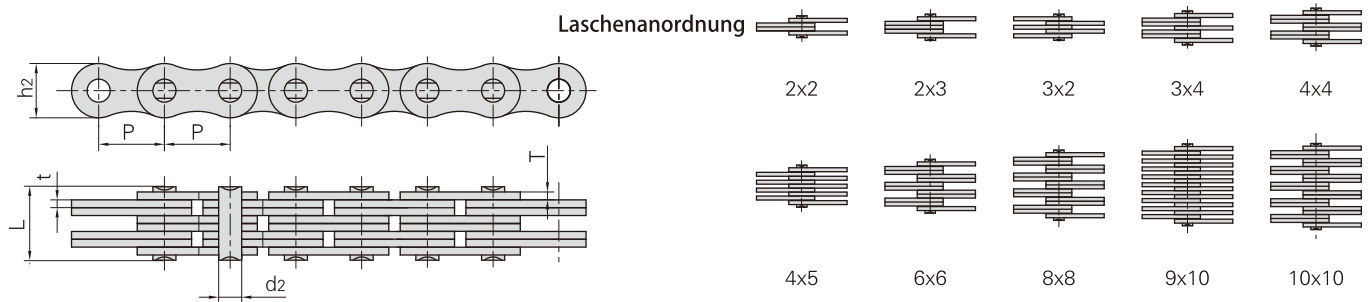


Donghua Ketten Nr.	Teilung	Laschenanordnung	Laschenhöhe	Laschenstärke	Bolzendurchmesser	Bolzenlänge	Bruchkraft	Durchschnittliche Bruchkraft	Gewicht pro Meter							
	P									h ₂ max	t/T max	d ₂ max	L max	Q min	Q ₀	q
	mm									mm	mm	mm	mm	kN/lbf	kN	kg/m
FLC578	15.875	8 × 7	12.70	1.85	5.08	30.8	90.0/20250	99.0	2.10							
CTL566	15.875	6 × 6	15.10	2.10	5.08	28.0	78.0/17534	86.0	2.44							
CTBLL588	15.875	8 × 8	14.80	1.70	5.94	30.7	85.0/19108	105.0	2.59							
*CH25	17.000	2 × 1	9.00	1.60	4.00	7.5	6.0/1348	7.5	0.27							
LF1866	18.550	6 × 6	15.80	3.00	6.00	39.8	106.0/23845	116.6	3.58							
LF1966	19.050															
F19S-44	19.050	4 × 4	14.70	2.25	5.98	21.8	76.5/17210	84.5	1.55							
F19S-66		6 × 6				31.0	115.0/25870	126.5	2.31							
F19V-44	19.050	4 × 4	15.20	2.42	6.50	22.4	71.0/16136	84.3	1.73							
F19V-66		6 × 6				32.3	106.0/24090	125.9	2.57							
F19VF1-66	19.050	6 × 6	17.60	2.42	6.50	32.3	164.0/36867	180.4	3.22							
F19V-88	19.050	8 × 8	15.20	2.42	6.50	42.4	142.0/31922	156.2	3.41							
FLC623	19.050	3 × 2	14.50	1.85	5.72	12.5	30.0/6744	33.0	0.81							
FLC634	19.050	4 × 3	14.50	1.85	5.72	16.1	46.0/10341	50.6	1.12							
FL2044	20.000	4 × 4	16.00	2.42	5.30	22.4	67.0/15062	73.7	1.83							
FLC823	25.400	3 × 2	19.46	3.25	8.28	20.9	65.0/14612	72.0	1.86							
FLC834		4 × 3				27.4	100.0/22500	110.0	2.57							
FLC845		5 × 4				34.2	130.0/29224	143.0	3.30							
FLC856		6 × 5				40.5	166.0/37343	183.0	4.00							
FLC867		7 × 6				47.0	195.7/44024	215.3	4.70							
FLC878		8 × 7				53.6	227.5/51180	250.5	5.40							
F25-34	25.400	3 × 4	23.40	3.05/4.00	10.85	28.6	125.0/28120	137.5	3.64							
F25-66		6 × 6				44.1	250.0/56240	275.0	5.93							
F25-66F1	25.000	6 × 6	24.00	3.00	10.85	42.0	147.0/33046	190.0	5.65							
FLC1034	31.750	4 × 3	25.40	3.25	9.53	28.4	82.7/18591	91.0	3.52							
FLC1045		5 × 4				34.3	110.0/24745	121.0	4.49							
FLC1056		6 × 5				40.6	137.9/31340	151.0	5.44							
FLC1067		7 × 8				47.2	165.4/37590	181.9	6.42							
FLC1078		8 × 7				53.8	193.0/43863	212.0	7.40							
LF31109	31.750	10 × 9	27.00	4.00	12.00	83.0	440.0/98915	500.0	12.70							
P35-44	35.000	△4 × 4	30.00	4.00	12.00	37.7	100.0/22500	110.0	5.96							
LF8844F1	88.900	4 × 4	84.00	13.50	40.00	122.0	1950.0/438360	2145.0	60.60							
D90F1	90.000	8 × 8	70.00	6.30	36.00	113.0	980.0/220460	1078.0	41.20							
LF105	105.000	11 × 10	80.00	6.00	40.00	143.0	1470.0/330690	1690.5	64.38							

Anmerkungen: * Bedeutet gerade Verbindungsplatte

△ Bedeutet spezielle Verbindungsplatten-Kombination

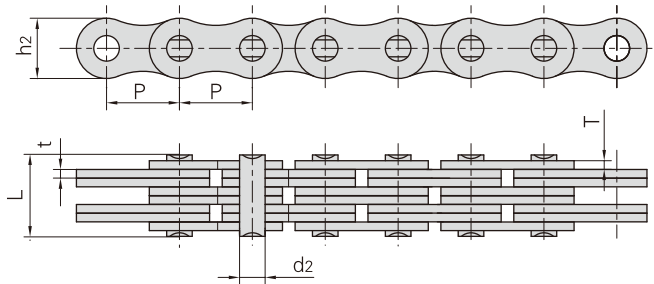
Flyerketten



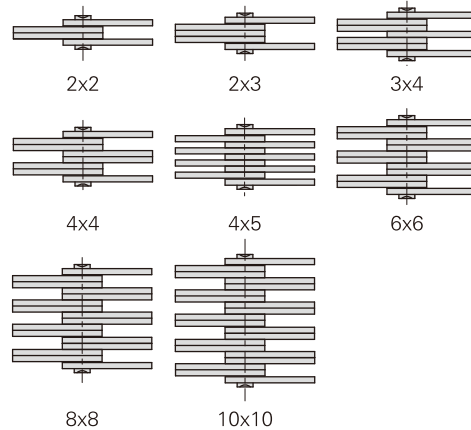
Donghua Ketten Nr.	Teilung	Laschenanordnung	Laschenhöhe	Laschendicke	Bolzendurchmesser	Bolzenlänge	Bruchkraft	Durchschnittliche Bruchkraft	Gewicht pro Meter							
	P									h ₂ max	t/T max	d ₂ max	L max	Q min	Q ₀	q
	mm									mm	mm	mm	mm	kN/lbf	kN	kg/m
AL0522	8.000	2 × 2	7.10	0.80	2.31	5.00	4.4/990	4.6	0.15							
AL0544		4 × 4				8.20	8.8/1980	9.3	0.28							
AL0566		6 × 6				11.60	13.0/2922	13.7	0.42							
AL322F1	9.525	2 × 2	7.00	1.30	3.58	7.50	9.3/2092	9.8	0.22							
AL344F1		4 × 4				12.80	18.5/4162	19.4	0.42							
AL366F1		6 × 6				18.20	27.8/6254	29.2	0.62							
AL388F1		8 × 8				23.60	37.0/8323	38.8	0.82							
AL322HF2	9.525	2 × 2	7.70	1.50	3.58	7.60	10.0/2248	10.5	0.24							
*AL344F3	9.525	4 × 4	7.70	1.20	3.58	11.60	18.0/4046	18.9	0.49							
AL344F4	9.525	4 × 4	7.90	1.57	3.58	15.00	25.0/5620	26.3	0.63							
AL866F1	25.400	6 × 6	20.50	3.00	7.92	40.30	135.0/30370	148.5	4.40							
AL822F3	25.400	2 × 2	20.80	3.25	7.92	15.90	57.9/13016	70.0	1.61							
AL10910F1	31.750	10 × 9	27.00	4.00	12.00	83.00	400.0/89923	441.0	11.80							
AL1066F2	31.750	6 × 6	25.60	4.00	9.53	52.20	265.0/59574	305.0	7.43							
AL1044F1	31.750	4 × 4	22.80	4.15	10.19	37.90	214.0/48107	234.5	4.32							
AL1266F1	38.100	6 × 6	30.00	4.80	13.30	64.30	420.0/94482	462.0	9.68							
BL432F1	12.700	△3 × 2	11.60	2.03	4.45	12.60	22.0/4946	24.0	0.76							
LH0844F5	12.700	4 × 4	12.07	1.60	5.08	16.00	27.5/6182	30.0	1.01							
LH0832F6	12.700	△3 × 2	12.07	2.03	4.45	13.16	19.8/4451	23.0	0.77							
LH081010F8	12.700	10 × 10	12.07	2.03	5.94	44.80	120.0/26977	130.0	6.35							
LH0844F	12.700	4 × 4	12.07	1.60	5.08	15.70	44.48/10000	48.9	1.01							
BL544F1	15.875	4 × 4	14.60	2.37	5.94	22.50	80.0/17985	85.0	1.76							
LH1034F2	15.875	3 × 4	15.00	2.42	5.94	20.30	65.0/14612	70.0	1.64							
BL544F8	15.875	4 × 4	15.00	1.70	5.80	17.00	46.0/10341	53.0	1.33							
LH1223F1	19.050	2 × 3	15.60	2.42	5.94	20.30	29.4/6610	32.5	1.50							
LH1245F1		4 × 5				25.20	39.2/8812	43.0	1.91							
LH1223F3	19.050	2 × 3	18.10	3.25	7.93	19.90	68.65/15433	71.0	1.95							
LH1234F3		3 × 4				26.60	102.97/23148	108.8	2.69							

Anmerkungen: * Bedeutet gerade Verbindungsplatte
 △ Bedeutet spezielle Verbindungsplatten-Kombination

Flyerketten



Laschenanordnung

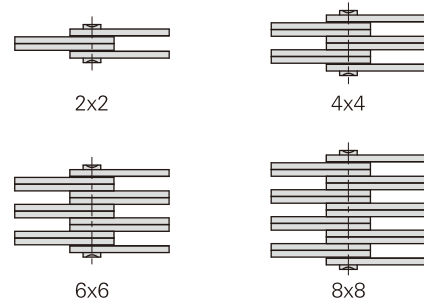
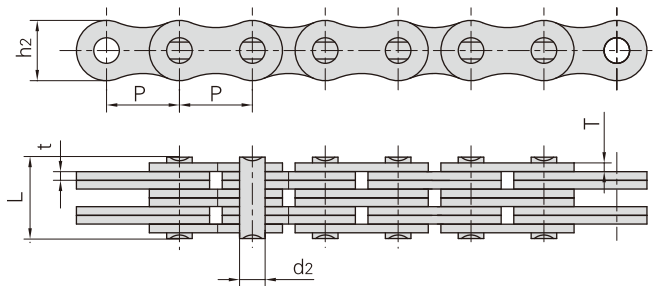


Donghua Ketten Nr.	Teilung	Laschenanordnung	Laschenhöhe	Laschenstärke	Bolzendurchmesser	Bolzenlänge	Bruchkraft	Durchschnittliche Bruchkraft	Gewicht pro Meter
	P								
	mm		mm	mm	mm	mm	kN/lbf	kN	kg/m
BL666F1	19.050	6 x 6	18.10	2.35	6.50	31.70	130.0/29224	143.0	3.30
*BL666GL	19.050	6 x 6	16.00	3.00	6.25	40.00	100.0/22480	110.0	3.80
BL866F1	25.400	6 x 6	24.10	3.10/4.00	10.85	45.70	200.0/44992	220.0	6.14
BL834F2		3 x 4							
BL834F3	25.400	3 x 4	24.10	4.00	10.90	32.90	142.0/31944	156.2	4.44
BL866F3		6 x 6							
BL834F5	25.400	3 x 4	24.10	3.10/4.00	10.90	28.00	120.0/26995	132.0	3.64
BL866F5	25.400	6 x 6	24.10	3.30/4.00	10.90	45.30	200.0/44992	220.0	4.94
LH1646F3	25.400	4 x 6	24.10	4.00	9.53	44.20	233.0/52378	256.5	6.22
BL844F8	25.400	4 x 4	25.10	3.00	10.90	30.00	120.0/26976	135.0	3.84
LH2066F1	31.750	6 x 6	29.70	4.09	11.10	55.70	303.0/68177	365.0	9.42
BL1046F2	31.750	4 x 6	29.70	4.00	11.10	47.00	231.3/51996	266.0	7.74
LH2054F4	31.750	△5 x 4	29.70	5.60	11.10	56.50	280.0/62947	340.0	9.56
LH281010F1	44.450	10x10	36.10	5.00	14.27	108.00	1220.0/274256	1400.0	22.20
LH3288F1	50.800	8 x 8	47.80	6.90	20.20	122.00	1200.0/269950	1320.0	33.53
LH3266F2	50.800	6 x 6	48.20	7.00	17.46	91.80	867.0/195040	953.7	24.52
LH3244F6	50.800	4 x 4	42.00	6.00	17.46	56.00	430.0/96667	505.0	11.96
LH3288F9	50.800	8 x 8	48.20	6.40	17.46	112.00	1040.0/233792	1144.0	31.89
LH3288F10	50.800	8 x 8	48.20	9.50	19.84	164.20	2100.0/472080	2310.0	51.63
LL0622F4	9.525	2 x 2	8.40	1.04	3.28	6.20	10.0/2248	10.5	0.23
LL0634F4		3 x 4				9.70	15.5/3484	16.5	0.39
LL0644F4		4 x 4				10.70	21.0/4720	22.0	0.44
LL0666F4		6 x 6				14.90	31.0/6970	33.0	0.65

Anmerkungen: * Bedeutet gerade Verbindungsplatte
 △ Bedeutet spezielle Verbindungsplatten-Kombination

Flyerketten

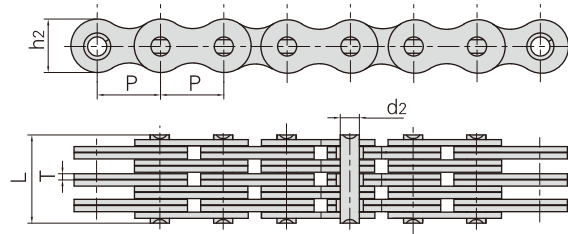
Laschenanordnung



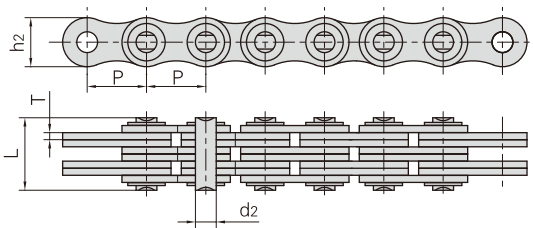
Donghua Ketten Nr.	Teilung	Laschenanordnung	Laschenhöhe	Laschendicke	Bolzendurchmesser	Bolzenlänge	Bruchkraft		Gewicht pro Meter
	P						Q _{min}	Durchschnittliche Bruchkraft	
	mm						kN/lbf		
	mm	h ₂ max	t/T max	d ₂ max	L max	kN	q		
LL0622F7	9.525	2 x 2	8.20	1.30	3.28	7.40	10.5/2360	11.6	0.27
LL0644F7		4 x 4				12.80			
LL0844F6	12.700	4 x 4	11.00	1.50	4.45	14.60	37.6/8452	81.4	0.82
LL0888F1		8 x 8				27.40			
LL0844F7	12.700	4 x 4	11.20	1.60	4.45	15.60	36.4/8180	41.5	0.85
LL0822F13	12.700	2 x 2	10.60	1.70	4.45	9.40	22.0/4940	23.0	0.45
LL0844F13		4 x 4				16.50			
LL0888F2	12.700	8 x 8	11.00	1.43	4.45	25.90	77.0/17310	84.7	1.55
LL1044F7	15.875	4 x 4	13.70	1.50	5.08	15.10	48.0/10790	52.8	1.04
LL1066F3	15.875	6 x 6	13.70	1.80	5.08	24.50	86.0/19333	94.6	1.68
LL101212F4	15.875	△12x12	11.80	1.60	5.08	42.50	110.0/24728	121.0	2.47
LL101212F5	15.875	△12x12	13.70	1.50	5.08	40.50	136.2/30620	150.0	3.00
LL1266F2	19.050	6 x 6	14.50	3.00	5.72	39.50	156.8/35249	173.0	3.03
LL1266F3	19.050	6 x 6	16.00	3.00	5.72	39.50	88.5/19895	97.5	3.03
*LL1266H	19.050	6 x 6	16.13	3.00	5.72	40.00	86.7/19490	100.0	3.75
LL1266F6	19.050	6 x 6	18.50	2.90	5.72	38.75	88.2/19827	97.0	4.12
LL1622F6	25.400	2 x 2	20.00	3.00	8.28	15.60	58.0/13047	63.8	1.40
LL2066F6	31.750	6 x 6	30.20	4.00	13.74	56.10	310.0/69690	356.5	13.13
LL3244F2	50.800	4 x 4	43.10	6.00	17.76	54.00	520.0/116978	572.0	12.62
LL3244F8		4 x 4	42.00	6.00	17.81	57.00	520.0/116900	560.0	12.31
LL3288F8		8 x 8				105.50	1040.0/233800	1125.0	24.32
LL4088F2	63.500	8 x 8	52.70	8.20	22.89	140.00	1440.0/323725	1660.0	42.39
LL4888H	76.200	8 x 8	70.00	12.00	36.50	204.00	2630.0/591638	2893.0	83.80

Anmerkungen: * bedeutet gerade Verbindungsplatte;
 △ bedeutet spezielle Verbindungsplatten-Kombination

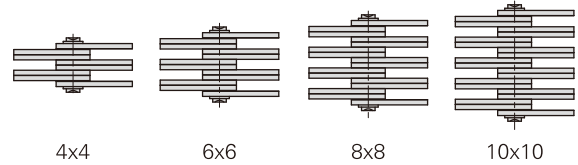
Flyerketten



Donghua Ketten Nr.	Teilung	Laschenanordnung	Laschenhöhe	Laschenstärke	Bolzendurchmesser	Bolzenlänge	Bruchkraft	Durchschnittliche Bruchkraft	Gewicht pro Meter
	P		h ₂ max	T max	d ₂ max	L max	Q min	Q ₀	q
	mm		mm	mm	mm	mm	kN/lbf	kN	kg/m
FB156	15.875	6 × 6	14.7	1.70	5.08	24.0	78.0/17550	86.0	1.91
FB156S				2.03		27.5	83.5/18784	92.0	2.24
FB196	19.050	6 × 6	16.0	1.85	6.50	25.4	95.0/21371	105.0	1.94
FB196S				2.42		32.3	130.0/29244	143.0	3.37

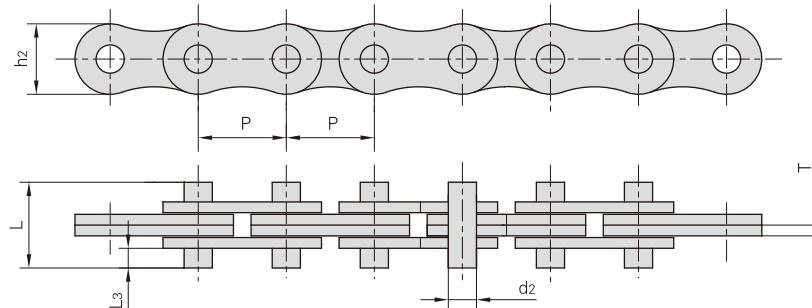


Laschenanordnung



Donghua Ketten Nr.	Teilung	Laschenanordnung	Laschenhöhe	Laschenstärke	Bolzendurchmesser	Bolzenlänge	Bruchkraft	Durchschnittliche Bruchkraft	Gewicht pro Meter
	P		h ₂ max	T max	d ₂ max	L max	Q min	Q ₀	q
	mm		mm	mm	mm	mm	kN/lbf	kN	kg/m
BL1266F1	38.1	6 × 6	35.7	5.6	12.70	78.9	453.7/102063	499.0	15.69
BL1666F4	50.8	6 × 6	48.2	7.2	17.46	99.2	867.0/195040	953.7	27.27
LL2488F1	38.1	8 × 8	33.4	5.0	14.63	94.0	680.0/152864	748.0	16.71
LL3244F1	50.8	4 × 4	42.0	6.0	17.81	61.6	520.0/116978	572.0	12.90
LL3266F1		6 × 6				86.0	780.0/175467	858.0	18.90
LL3288F1		8 × 8				110.0	1040.0/233956	1144.0	24.89
LL321010F1		10 × 10				134.3	1300.0/292445	1430.0	30.89
LL3244F3	50.8	4 × 4	43.1	6.0	17.76	60.0	520.0/116978	572.0	13.06
LL3266F3		6 × 6				84.4	780.0/175467	858.0	19.44
LL3288F3		8 × 8				108.6	1040.0/233956	1144.0	25.43
LL3244F4	50.8	4 × 4	42.0	6.4	17.81	67.5	520.0/116980	572.0	13.82
LL3266F4		6 × 6				92.8	780.0/175467	858.0	20.17
LL3288F7		8 × 8				117.0	1040.0/233800	1144.0	26.30
LL4066F1	63.5	6 × 6	57.5	6.3	19.85	100.0	1166.2/262162	1283.0	29.30
LL4088F1		8 × 8				126.0	1558.2/350283	1714.0	38.10
LL4088F3	63.5	8 × 8	57.5	6.0	19.85	119.0	1395.0/313596	1535.0	35.79
LL4044F4	63.5	4 × 4	52.7	8.0	22.89	80.8	780.0/175351	860.0	21.82
LL4888F3	76.2	8 × 8	73.0	7.2	34.67	138.5	1840.0/413632	2024.0	56.02
LL481010F3		10 × 10				165.5	2340.0/526032	2574.0	69.18

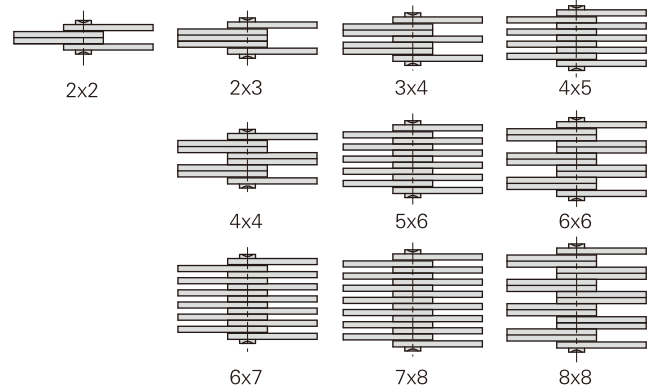
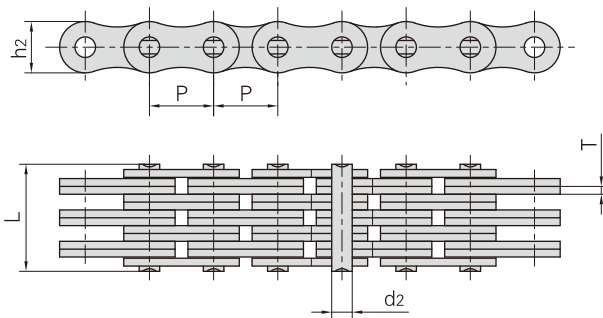
Flyerketten



Donghua Ketten Nr.	Teilung	Laschenhöhe	Laschen- dicke	Bolzen- durch- messer	Bolzenlänge		Bruchkraft	Durch- schnittliche Bruchkraft	Gewicht pro Meter
	P	h2 max	T max	d2 max	L max	L3	Q min	Q0	q
	mm	mm	mm	mm	mm	mm	kN/lbf	kN	kg/m
AL422F1-D2	12.700	11.00	1.60	3.96	14.4	3.80	14.1/3172	15.5	0.50
AL522-D2	15.875	12.80	2.03	5.10	16.0	3.90	22.0/4950	23.0	0.69
AL522-D2F1					19.0	5.40			
AL522F1-D2	15.800	12.70	2.00	5.09	16.1	3.90	30.38/6834	32.0	0.66
AL622-DD3F1	19.050	16.90	3.25	5.94	22.3	4.40	50.0/11240	55.0	1.44
AL644F4-D2	19.050	14.60	3.10	5.90	22.5	4.90	36.0/8093	40.0	1.14
BL422-DD3	12.700	12.07	2.03	5.08	31.4	11.50	22.24/50000	24.5	0.91
LH1222-D2	19.050	18.10	3.25	7.92	22.6	4.60	48.93/11000	54.0	1.66
LH1222F7-DD3					29.4	8.00	48.93/11001	55.0	1.80
LH1222-DD3F1					29.0	7.75	48.93/10999	53.8	1.80
LH1246-DD3F1					42.5	4.75	97.9/22008	112.5	3.88
LH1622F1	25.400	24.10	4.00	9.53	34.0	8.80	84.5/19010	93.0	2.40
LH1622-D2					36.0	9.80			2.83
LH1622-DD3F1					45.0	14.30			3.04
LH1622-DD3F2					25.4	4.45			2.60
BL822F1-D2	25.400	24.10	4.60	8.80	32.4	6.80	84.5/19010	93.0	3.03
BL822HF1-D2				9.53	32.4				3.07
BL822HF2-DD3	25.400	24.00	5.00	9.53	35.0	7.05	84.5/19010	97.5	2.55
BL1022F1-D2	31.750	29.00	5.60	11.30	41.2	8.40	130.0/29245	143.0	4.49
BL1022H-D2	31.750	29.70	5.60	11.10	41.2	8.40	130.0/29245	143.0	4.69
LH2022-DD3F1	31.750	29.70	4.80	11.10	30.4	5.50	115.6/25987	127.2	3.89
LL1222F3-D2	19.050	14.50	2.25	5.72	22.0	6.30	44.1/9920	48.5	0.89
LL1222F5-DD3	19.050	14.50	3.00	5.72	29.0	8.30	45.1/10139	49.5	1.17
LL1222F5-DD3F1	19.050	14.50	3.00	5.72	22.0	4.80	45.1/10140	50.5	1.10
LL1622-D2	25.400	21.00	3.10	8.28	36.1	11.70	58.0/13050	64.0	1.92
LL1622F7-DD3	25.400	21.00	3.05	8.28	35.0	11.20	75.4/16950	79.2	1.85
LL1622F7-DD3F1	25.400	20.00	3.00	8.28	30.5	9.00	58.0/13040	63.8	1.65
LL1623F1-DD3	25.400	21.00	4.00	8.28	34.0	7.00	60.0/13488	66.0	2.70
F1422-DD3	14.290	13.00	2.03	4.97	19.1	5.20	27.5/6182	30.0	0.76
1922V-D2	19.050	16.70	3.17	6.10	22.6	4.65	55.0/12364	60.5	1.40
F2022-D2	20.750	19.00	3.40	7.65	23.0	4.50	50.0/11500	55.0	1.79
F2422-D2	23.950	22.20	3.86	8.69	27.8	5.90	60.0/13500	66.0	2.37
F2422F1-D2	24.000	22.00	4.00	9.00	27.0	5.40	60.0/13500	66.0	2.39

Flyerketten

Laschenanordnung

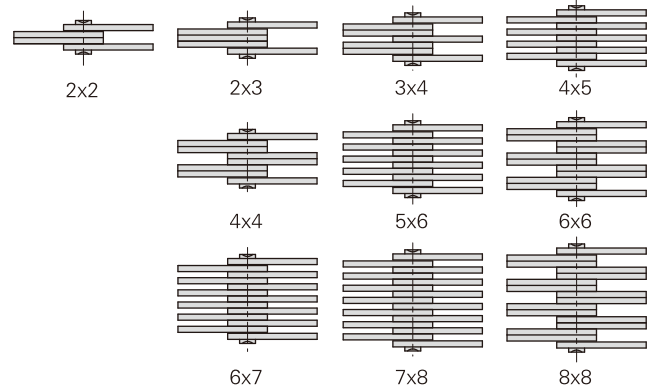
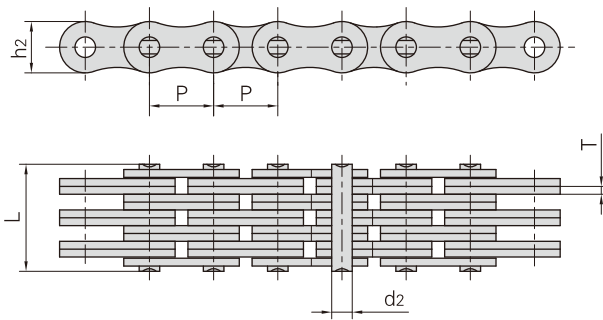


Donghua Ketten Nr.	Teilung	Laschenanordnung	Laschenhöhe	Laschenstärke	Bolzendurchmesser	Bolzenlänge	Kettenlänge bei 100 Teilungen	Bruchkraft	Gewicht pro Meter
	P		h ₂ max	T max	d ₂ max	L max		Q min	q
	mm		mm	mm	mm	mm	mm	kN/lbf	kg/m
1222	12.700	2 × 2	10.6	1.70	4.45	9.2	1262	21.0/4721	0.44
1234		3 × 4				14.2		31.0/6974	0.75
1244		4 × 4				16.1		42.0/9442	0.86
1256		5 × 6				21.1		53.0/12045	1.17
1266		6 × 6				23.0		63.0/14162	1.27
1288		8 × 8				29.9		85.0/19318	1.70
1523	15.875	2 × 3	12.7	1.94	5.08	12.1	1580	29.0/6590	0.75
1534		3 × 4				16.5		46.0/10454	1.04
1543		△4 × 3				16.5		46.0/10455	1.05
1544		4 × 4				18.6		58.0/13181	1.18
1545		4 × 5				20.3		58.0/13181	1.33
1556		5 × 6				24.0		72.0/16363	1.63
1566		6 × 6				26.2		87.0/19772	1.77
1567		6 × 7				28.0		90.0/20454	1.91
1578		7 × 8				32.5		101.0/22954	2.20
1588		8 × 8				34.0		115.0/26136	2.34
1944	19.050	4 × 4	15.0	2.29	5.72	21.3	1891	73.0/16590	1.58
1966		6 × 6				30.7		110.0/25000	2.37
1978		7 × 8				37.7		122.0/27426	2.98
1988		8 × 8				40.0		140.0/31817	3.13

Anmerkungen: △ bedeutet spezielle Verbindungsplatten-Kombination

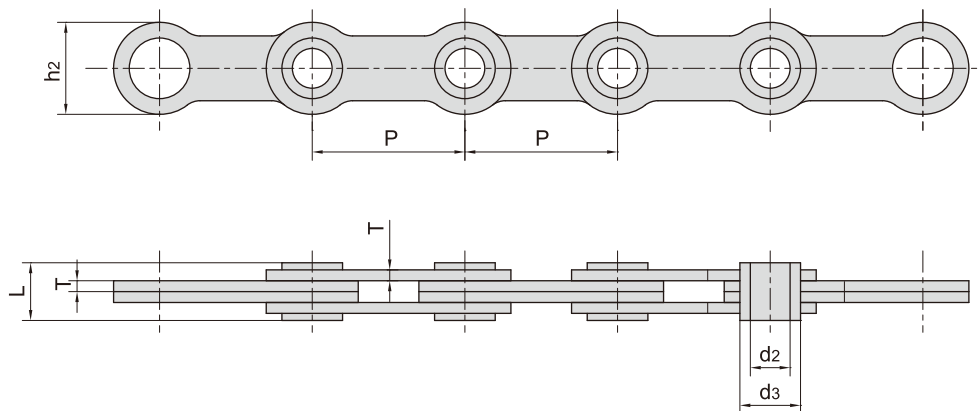
Flyerketten

Laschenanordnung



Donghua Ketten Nr.	Teilung	Laschenanordnung	Laschenhöhe	Laschendicke	Bolzendurchmesser	Bolzenlänge	Kettenlänge bei 100 Teilungen	Bruchkraft	Gewicht pro Meter
	P							Q _{min}	q
	mm							kN/lbf	kg/m
2522	25.400	2 × 2	20.2	3.06	8.28	15.5	2532	72.0/16186	1.47
2523		2 × 3						72.0/16363	1.83
2534		3 × 4						108.0/24545	2.55
2544		4 × 4						145.0/32597	2.92
2545		4 × 5						144.0/30727	3.26
2556		5 × 6						180.0/40908	3.96
2567		6 × 7						216.0/49090	4.68
2578		7 × 8						252.0/57272	5.39
2588		8 × 8						290.0/65908	5.77
3134		31.750						3 × 4	22.8
3144	4 × 4		214.0/48109	4.24					
3166	6 × 6		304.0/68339	6.33					
3188	8 × 8		428.0/96214	8.40					
1244F3	12.700	4 × 4	11.0	1.43	4.45	1262	1262	24.97/7861	0.78
1266F1		6 × 6						52.46/7861	1.06

Flyerketten mit Hohlbolzen



Donghua Ketten Nr.	Teilung	Laschenanordnung	Laschenhöhe	Laschendicke	Bolzendurchmesser		Bolzenlänge	Bruchkraft	Durchschnittliche Bruchkraft	Gewicht pro Meter
	P mm				h2 max mm	T max mm				
LF36	36.513	2 × 2	22.3	2.03	10.2	14.4	12.0	20.0/4496	25.0	0.85
LF36F2	36.513	2 × 2	24.0	2.50	9.5	14.9	15.0	30.0/6744	37.5	1.19
LF36F3	36.513	2 × 2	24.0	2.50	10.0	14.9	15.0	30.0/6744	37.5	1.16
LF36F4	36.513	2 × 2	23.6	2.60	8.2	11.0	16.6	15.0/3372	30.0	1.25
LF36F6	36.513	2 × 2	22.0	2.60	9.5	14.5	14.5	35.0/7868	37.5	1.15
LF36F7	36.513	2 × 2	22.4	2.60	9.6	13.0	14.7	31.0/6969	40.5	1.05
LF36F8	36.513	2 × 2	23.6	2.60	10.0	13.0	16.6	15.0/3372	30.0	1.25