

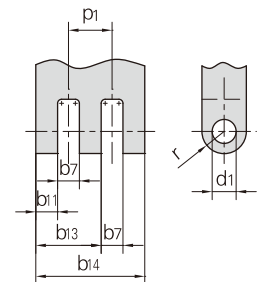
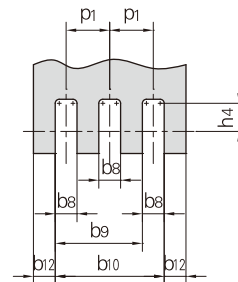
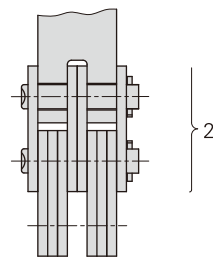
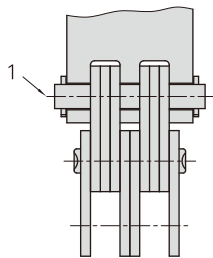
Gabelkopf für Flyerketten LH Serie

Ausserhalb Gabelkopf

Innerhalb Gabelkopf

Ausserhalb Gabelkopf

Innerhalb Gabelkopf



Gabelkopftyp

Bemaßungssymbole der Gabelkopf

ISO Ketten Nr.	ANSI Ketten Nr.	b7	b8	b9	b10	b11 max	b12 min	b13 max	b14 max	p1 nom	d1 min	h4 min	r max
		mm	mm	mm	mm	mm	mm	mm	mm	mm	mm	mm	mm
LH0822	BL422	-	4.41	-	-	4.03	3.12	-	-	-	5.11	6.35	6.35
LH0823	BL423	-	6.53	-	-	6.05	3.12	-	-	-			
LH0834	BL434	2.21	4.33	10.68	-	4.03	3.12	10.20	-	6.35			
LH0844	BL444	4.41	4.41	12.89	-	4.03	3.12	12.25	-	8.47			
LH0846	BL446	4.41	6.53	17.12	-	6.05	3.12	16.32	-	10.59			
LH0866	BL466	4.41	4.41	12.89	21.36	4.03	3.12	12.25	20.47	8.47			
LH1022	BL522	-	5.24	-	-	4.80	3.72	-	-	-	5.98	7.92	7.92
LH1023	BL523	-	7.76	-	-	7.20	3.72	-	-	-			
LH1034	BL534	2.62	5.14	12.69	-	4.80	3.72	12.12	-	7.55			
LH1044	BL544	5.24	5.24	15.31	-	4.80	3.72	14.56	-	10.07			
LH1046	BL546	5.24	7.76	20.35	-	7.20	3.72	19.40	-	12.59			
LH1066	BL566	5.24	5.24	15.31	25.38	4.80	3.72	14.56	24.31	10.07			
LH1222	BL622	-	6.96	-	-	6.41	4.95	-	-	-	7.96	9.53	9.53
LH1223	BL623	-	10.31	-	-	9.61	4.95	-	-	-			
LH1234	BL634	3.48	6.83	16.88	-	6.41	4.95	16.18	-	10.05			
LH1244	BL644	6.96	6.96	20.36	-	6.41	4.95	19.43	-	13.40			
LH1246	BL646	6.96	10.31	27.06	-	9.61	4.95	25.89	-	16.75			
LH1266	BL666	6.96	6.96	20.36	33.76	6.41	4.95	19.43	32.45	13.40			
LH1622	BL822	-	8.59	-	-	7.93	6.13	-	-	-	9.56	12.70	12.70
LH1623	BL823	-	12.73	-	-	11.89	6.13	-	-	-			
LH1634	BL834	4.29	8.43	20.86	-	7.93	6.13	19.97	-	12.42			
LH1644	BL844	8.59	8.59	25.15	-	7.93	6.13	23.98	-	16.56			
LH1646	BL846	8.59	12.73	33.43	-	11.89	6.13	31.96	-	20.70			
LH1666	BL866	8.59	8.59	25.15	41.71	7.93	6.13	23.98	40.04	16.56			

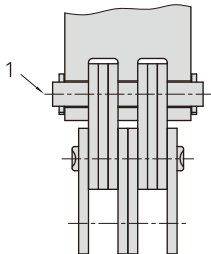
Hinweis: 1-Verbindungsbolzen

2-Verbindungsglieda

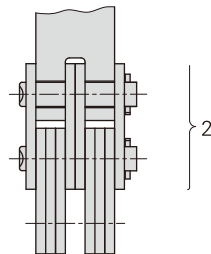
a-der Verbindungsglied sollte mit einer Presssitz- Außenlasche verwendet werden

Gabelkopf für Flyerketten LH Serie

Ausserhalb Gabelkopf

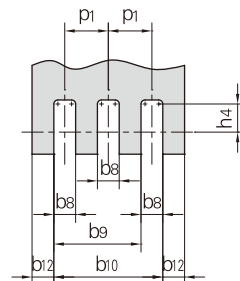


Innerhalb Gabelkopf

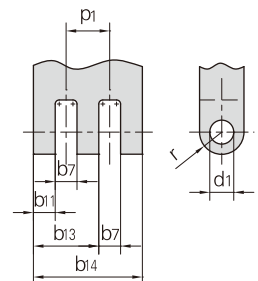


Gabelkopftyp

Ausserhalb Gabelkopf



Innerhalb Gabelkopf



Bemaßungssymbole der Gabelkopf

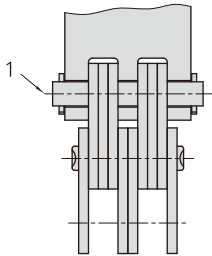
ISO Ketten Nr.	ANSI Ketten Nr.	b7	b8	b9	b10	b11 max	b12 min	b13 max	b14 max	p1 nom	d1 min	h4 min	r max
		mm	mm	mm	mm	mm	mm	mm	mm	mm	mm	mm	mm
LH2022	BL1022	-	10.26	-	-	9.48	7.35	-	-	-	11.14	15.88	15.88
LH2023	BL1023	-	15.21	-	-	14.22	7.35	-	-	-			
LH2034	BL1034	5.13	10.08	24.93	-	9.48	7.35	23.86	-	14.85			
LH2044	BL1044	10.26	10.26	30.06	-	9.48	7.35	28.65	-	19.80			
LH2046	BL1046	10.26	15.21	39.96	-	14.22	7.35	38.18	-	24.75			
LH2066	BL1066	10.26	10.26	30.06	49.86	9.48	7.35	28.65	47.82	19.80	12.74	19.05	19.05
LH2422	BL1222	-	12.05	-	-	11.16	8.66	-	-	-			
LH2423	BL1223	-	17.87	-	-	16.74	8.66	-	-	-			
LH2434	BL1234	6.02	11.84	29.31	-	11.16	8.66	28.05	-	17.46			
LH2444	BL1244	12.05	12.05	35.33	-	11.16	8.66	33.68	-	23.28			
LH2446	BL1246	12.05	17.87	46.97	-	16.74	8.66	44.89	-	29.10			
LH2466	BL1266	12.05	12.05	35.33	58.61	11.16	8.66	33.68	56.20	23.28	14.31	22.23	22.23
LH2822	BL1422	-	13.76	-	-	12.76	9.90	-	-	-			
LH2823	BL1423	-	20.41	-	-	19.13	9.90	-	-	-			
LH2834	BL1434	6.88	13.53	33.48	-	12.76	9.90	32.04	-	19.95			
LH2844	BL1444	13.76	13.76	40.36	-	12.76	9.90	38.47	-	26.60			
LH2846	BL1446	13.76	20.41	53.66	-	19.13	9.90	51.28	-	33.25			
LH2866	BL1466	13.76	13.76	40.36	66.97	12.76	9.90	38.47	64.18	26.60	17.49	25.40	25.40
LH3222	BL1622	-	15.65	-	-	14.53	11.28	-	-	-			
LH3223	BL1623	-	23.22	-	-	21.80	11.28	-	-	-			
LH3234	BL1634	7.82	15.40	38.11	-	14.53	11.28	36.48	-	22.71			
LH3244	BL1644	15.65	15.65	45.93	-	14.53	11.28	43.80	-	30.28			
LH3246	BL1646	15.65	23.22	61.07	-	21.80	11.28	58.38	-	37.85			
LH3266	BL1666	15.65	15.65	45.93	76.22	14.53	11.28	43.80	73.07	30.28	23.83	31.75	31.75
LH4022	BL2022	-	20.53	-	-	19.19	14.86	-	-	-			
LH4023	BL2023	-	30.49	-	-	28.78	14.86	-	-	-			
LH4034	BL2034	10.27	20.23	50.11	-	19.19	14.86	48.11	-	29.88			
LH4044	BL2044	20.53	20.53	60.37	-	19.19	14.86	57.76	-	39.84			
LH4046	BL2046	20.53	30.49	80.30	-	28.78	14.86	76.99	-	49.80			
LH4066	BL2066	20.53	20.53	60.37	100.22	19.19	14.86	57.76	96.33	39.84			

Hinweis: 1-Verbindungsbolzen
2-Verbindungsglieder

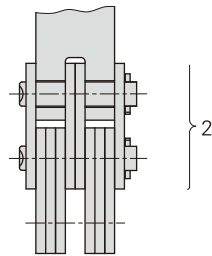
a-der Verbindungsglied sollte mit einer Presssitz- Außenlasche verwendet werden

Gabelkopf für Flyerketten LH Serie

Ausserhalb Gabelkopf

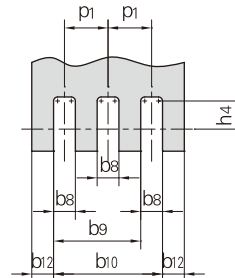


Innerhalb Gabelkopf

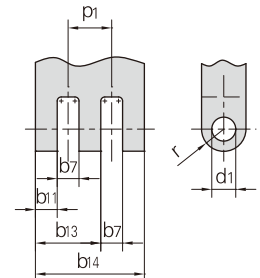


Gabelkopftyp

Ausserhalb Gabelkopf



Innerhalb Gabelkopf



Bemaßungssymbole der Gabelkopf

ISO Ketten Nr.	b7	b8	b9	b10	b11 max	b12 min	b13 max	b14 max	p1 nom	d1 min	h4 min	r max
	mm	mm	mm	mm	mm	mm	mm	mm	mm	mm	mm	mm
LL0822	-	3.35	-	-	2.97	2.33	-	-	-	-	-	-
LL0844	3.35	3.35	9.71	-	2.97	2.33	9.07	-	6.35	4.46	6.00	6.35
LL0866	3.35	3.35	9.71	16.06	2.97	2.33	9.07	15.17	6.35	-	-	-
LL1022	-	3.58	-	-	3.14	2.48	-	-	-	-	-	-
LL1044	3.58	3.58	10.33	-	3.14	2.48	9.58	-	6.75	5.09	8.00	7.92
LL1066	3.58	3.58	10.33	17.08	3.14	2.48	9.58	16.01	6.75	-	-	-
LL1222	-	4.16	-	-	3.61	2.85	-	-	-	-	-	-
LL1244	4.16	4.16	11.96	-	3.61	2.85	11.03	-	7.80	5.73	9.00	9.52
LL1266	4.16	4.16	11.96	19.76	3.61	2.85	11.03	18.45	7.80	-	-	-
LL1622	-	6.81	-	-	6.15	4.80	-	-	-	-	-	-
LL1644	6.81	6.81	19.81	-	6.15	4.80	18.64	-	13.00	8.30	12.00	12.70
LL1666	6.81	6.81	19.81	32.81	6.15	4.80	18.64	31.14	13.00	-	-	-
LL2022	-	7.86	-	-	7.08	5.55	-	-	-	-	-	-
LL2044	7.86	7.86	22.86	-	7.08	5.55	21.45	-	15.00	10.21	14.00	15.88
LL2066	7.86	7.86	22.86	37.86	7.08	5.55	21.45	35.82	15.00	-	-	-
LL2422	-	10.91	-	-	10.02	7.80	-	-	-	-	-	-
LL2444	10.91	10.91	31.91	-	10.02	7.80	30.26	-	21.00	14.65	18.00	19.05
LL2466	10.91	10.91	31.91	52.91	10.02	7.80	30.26	50.50	21.00	-	-	-
LL2822	-	13.46	-	-	12.46	9.68	-	-	-	-	-	-
LL2844	13.46	13.46	39.46	-	12.46	9.68	37.57	-	26.00	15.92	20.00	22.20
LL2866	13.46	13.46	39.46	65.47	12.46	9.68	37.57	62.68	26.00	-	-	-
LL3222	-	13.51	-	-	12.39	9.68	-	-	-	-	-	-
LL3244	13.51	13.51	39.51	-	12.39	9.68	37.38	-	26.00	17.83	23.00	25.40
LL3266	13.51	13.51	39.51	65.52	12.39	9.68	37.38	62.37	26.00	-	-	-
LL4022	-	17.21	-	-	15.87	12.38	-	-	-	-	-	-
LL4044	17.21	17.21	50.41	-	15.87	12.38	47.80	-	33.20	22.91	28.00	31.75
LL4066	17.21	17.21	50.41	83.62	15.87	12.38	47.80	79.73	33.20	-	-	-
LL4822	-	21.41	-	-	19.84	15.45	-	-	-	-	-	-
LL4844	21.41	21.41	62.82	-	19.84	15.45	59.72	-	41.40	29.26	34.00	38.10
LL4866	21.41	21.41	62.82	104.20	19.84	15.45	59.72	99.60	41.40	-	-	-

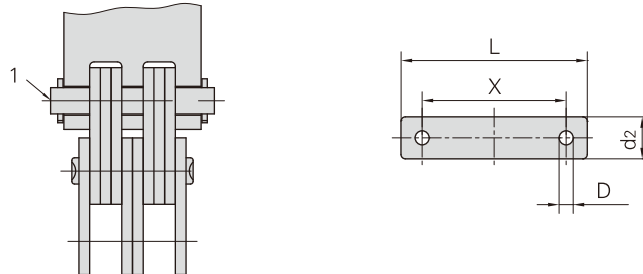
Hinweis: 1-Verbindungsbolzen

2-Verbindungsglieder

a-der Verbindungsglied sollte mit einer Presssitz- Außenlasche verwendet werden

Verbindung Bolzen für Gabelkopf (LH Serie)

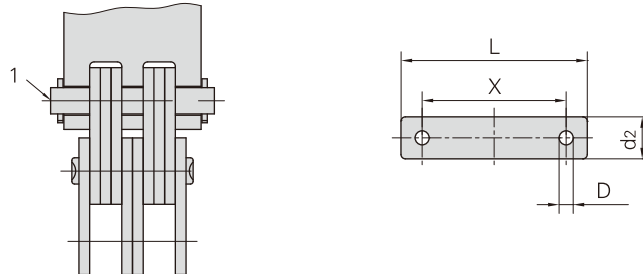
Verbindungsbolzen



ISO Ketten Nr.	ANSI Ketten Nr.	Abstand zwischen Bohrungen		Bolzenlänge		Bolzendurchmesser		Bohrungsdurchmesser	
		X	L	d2	D				
		min	max	max					
		mm	mm	mm	mm			mm	mm
LH0822	BL422	10.8	17.2	5.08	1.6				
LH0823	BL423	12.9	19.3						
LH0834	BL434	17.0	23.4						
LH0844	BL444	19.2	25.6						
LH0846	BL446	23.5	29.9						
LH0866	BL466	27.7	34.1						
LH1022	BL522	12.8	20.8	5.94	2.0				
LH1023	BL523	15.3	23.3						
LH1034	BL534	20.2	28.2						
LH1044	BL544	22.9	30.9						
LH1046	BL546	27.9	35.9						
LH1066	BL566	32.9	40.9						
LH1222	BL622	17.0	29.8	7.92	3.2				
LH1223	BL623	20.3	33.1						
LH1234	BL634	26.9	39.7						
LH1244	BL644	30.4	43.2						
LH1246	BL646	37.1	49.9						
LH1266	BL666	43.8	56.6						
LH1622	BL822	21.0	33.8	9.53	3.2				
LH1623	BL823	25.1	37.9						
LH1634	BL834	33.2	46.0						
LH1644	BL844	37.5	50.3						
LH1646	BL846	45.8	58.6						
LH1666	BL866	54.1	66.9						
LH2022	BL1022	25.1	41.1	11.10	4.0				
LH2023	BL1023	30.0	46.0						
LH2034	BL1034	39.7	55.7						
LH2044	BL1044	44.9	60.9						
LH2046	BL1046	54.8	70.8						
LH2066	BL1066	64.7	80.7						

Verbindung Bolzen für Gabelkopf (LH Serie)

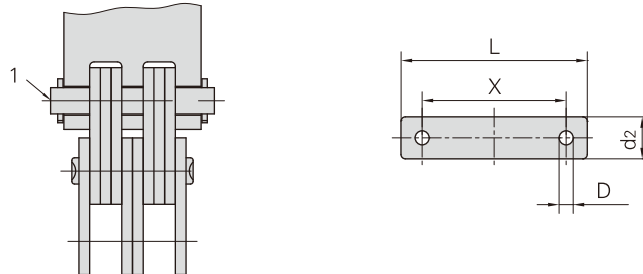
Verbindungsbolzen



ISO Ketten Nr.	ANSI Ketten Nr.	Abstand zwischen Bohrungen	Bolzenlänge	Bolzendurchmesser	Bohrungsdurchmesser
		X min	L max	d2 max	D
		mm	mm	mm	mm
LH2422	BL1222	29.5	45.5	12.70	4.0
LH2423	BL1223	35.3	51.3		
LH2434	BL1234	46.7	62.7		
LH2444	BL1244	52.8	68.8		
LH2446	BL1246	64.4	80.4		
LH2466	BL1266	76.0	92.0		
LH2822	BL1422	33.7	49.7	14.27	4.0
LH2823	BL1423	40.3	56.3		
LH2834	BL1434	53.4	69.4		
LH2844	BL1444	60.3	76.3		
LH2846	BL1446	73.6	89.6		
LH2866	BL1466	86.9	102.9		
LH3222	BL1622	38.3	58.3	17.46	5.0
LH3223	BL1623	45.9	65.9		
LH3234	BL1634	60.8	80.8		
LH3244	BL1644	68.6	88.6		
LH3246	BL1646	83.7	103.7		
LH3266	BL1666	98.9	118.9		
LH4022	BL2022	50.4	70.4	23.81	5.0
LH4023	BL2023	60.3	80.3		
LH4034	BL2034	79.9	99.9		
LH4044	BL2044	90.2	110.2		
LH4046	BL2046	110.1	130.1		
LH4066	BL2066	130.0	150.0		

Verbindung Bolzen für Gabelkopf (LL Serie)

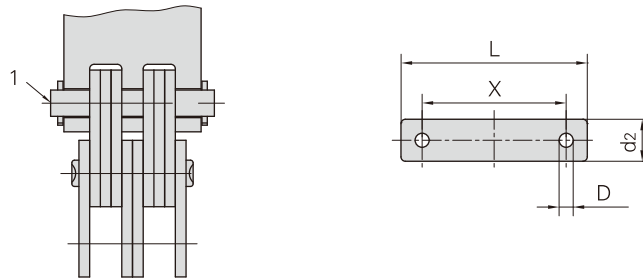
Verbindungsbolzen



ISO Ketten Nr.	Abstand zwischen Bohrungen	Bolzenlänge	Bolzendurchmesser	Bohrungsdurchmesser
	X min	L max	d2 max	D
	mm	mm	mm	mm
LL0822	8.1	14.5	4.45	1.6
LL0844	14.5	20.9		
LL0866	20.8	27.2		
LL1022	8.6	15.0	5.08	1.6
LL1044	15.4	21.8		
LL1066	22.1	28.5		
LL1222	10.0	18.0	5.72	2.0
LL1244	17.8	25.8		
LL1266	25.6	33.6		
LL1622	16.5	29.3	8.28	3.2
LL1644	29.5	42.3		
LL1666	42.5	55.3		
LL2022	19.1	31.9	10.19	3.2
LL2044	34.1	46.9		
LL2066	49.1	61.9		
LL2422	26.6	42.6	14.63	4.0
LL2444	47.6	63.6		
LL2466	68.6	84.6		
LL2822	32.9	48.9	15.90	4.0
LL2844	58.9	74.9		
LL2866	84.9	100.9		
LL3222	33.0	53.0	17.81	5.0
LL3244	59.0	79.0		
LL3266	85.0	105.0		
LL4022	42.1	67.3	22.89	6.3
LL4044	75.3	100.5		
LL4066	108.5	133.7		
LL4822	52.4	77.6	29.24	6.3
LL4844	93.8	119.0		
LL4866	135.2	160.4		

Verbindung Bolzen für Gabelkopf (LL Serie)

Verbindungsbolzen



ISO Ketten Nr.	Abstand zwischen Bohrungen	Bolzenlänge	Bolzendurchmesser	Bohrungsdurchmesser
	X min	L max	d2 max	D
	mm	mm	mm	mm
LL2466(DG)	67.7	85.0	14.63	5.0
LL2844(DGF1)	66.0	83.4	15.90	5.0
LL2866(DG)	73.6	90.8		5.0
LL3266(DGF1)	85.7	104.0	17.81	5.0
LL3288(DGF2)	117.0	134.0		5.0
LL3244F2(DG)	73.2	90.2		4.7
LL3266F6(DG)	85.7	104.0		5.0
LL4066(DG)	104.3	125.3	22.89	6.3
LL4088F2(DG)	169.0	195.0		6.0