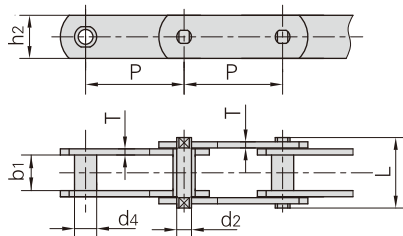
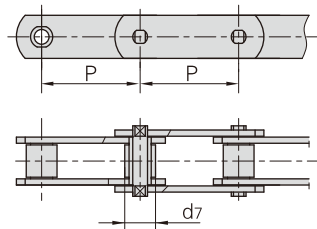


Förderketten aus rostfreiem Stahl (M Serie)

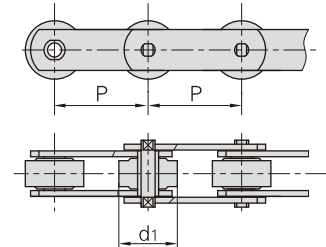
1. Ohne Rollen



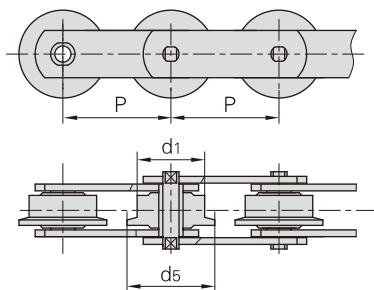
2. Mit Schonrollentyp (S)



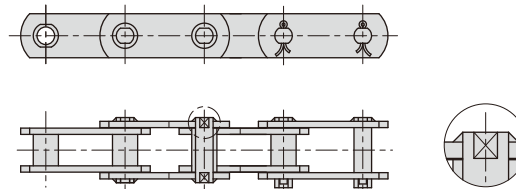
3. Mit Laufrollentyp (P)



4. Mit Bundrollentyp (F)



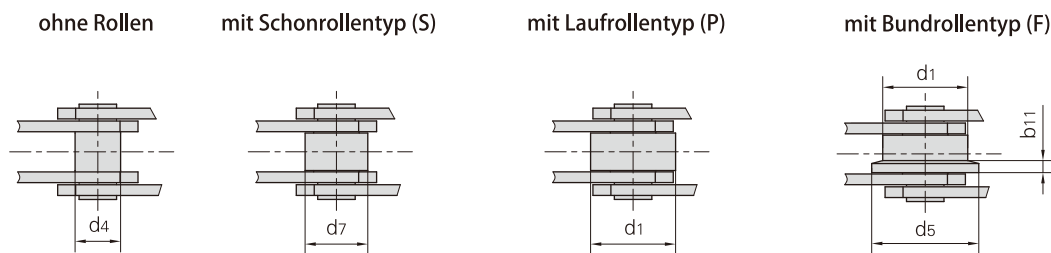
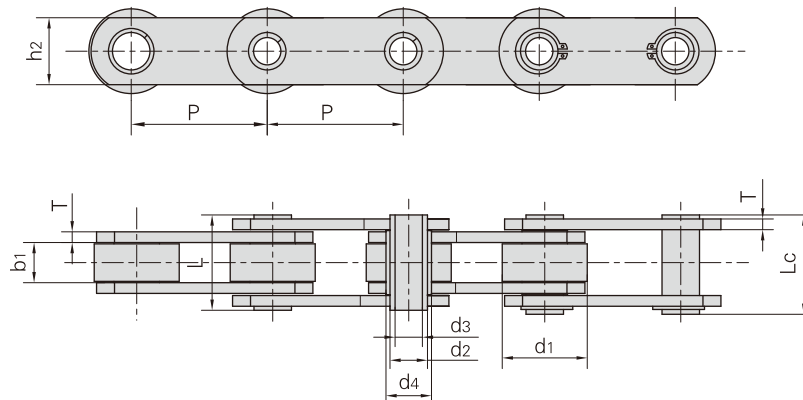
5. Bolzen mit Laschen verschweisst



Donghua Ketten Nr.	Teilung							Rollendurchmesser			Buchsen-durchmesser
	P							d1 max	d7 max	d5 max	d4 max
	mm							mm	mm	mm	mm
M20SS	40.0	50.0	63.0	80.0	100.0	125.0	160.0	25.00	12.50	30.00	9.00
M28SS	50.0	63.0	80.0	100.0	125.0	160.0	-	30.00	15.00	36.00	10.00
M40SS	63.0	80.0	100.0	125.0	160.0	-	-	36.00	18.00	42.00	12.50
M56SS	63.0	80.0	100.0	125.0	160.0	-	-	42.00	21.00	50.00	15.00
M80SS	80.0	100.0	125.0	160.0	-	-	-	50.00	25.00	60.00	18.00
M112SS	80.0	100.0	125.0	160.0	-	-	-	60.00	30.00	70.00	21.00
M160SS	100.0	125.0	160.0	-	-	-	-	70.00	36.00	85.00	25.00

Donghua Ketten Nr.	Lichte Weite	Bolzen-durchmesser	Bolzenlänge	Laschenhöhe	Laschendicke	Bruchkraft
	b1 min mm	d2 max mm	L max mm	h2 max mm	t/T max mm	Q min kN/lbf
M20SS	16.00	6.00	35.00	18.00	2.50	20.0/4545
M28SS	18.00	7.00	40.00	20.00	3.00	28.0/6364
M40SS	20.00	8.50	45.00	25.00	3.50	40.0/9091
M56SS	24.00	10.00	52.00	30.00	4.00	56.0/12727
M80SS	28.00	12.00	62.00	35.00	5.00	80.0/18182
M112SS	32.00	15.00	73.00	40.00	6.00	112.0/25454
M160SS	37.00	18.00	85.00	50.00	7.00	160.0/36364

Förderketten aus rostfreiem Stahl (MC Serie)



Donghua Ketten Nr.	Teilung					Rollendurchmesser				Buchsen- durch- messer	Laschen- höhe
	P					d1 max	d7 max	d5 max	b11		
	mm					mm	mm	mm	mm	mm	mm
MC28SS	63.0	80.0	100.0	125.0	160.0	36.0	25.0	45.0	4.5	17.5	2.5
MC56SS	80.0	100.0	125.0	160.0	200.0	50.0	30.0	60.0	5.0	21.0	35.0
MC112SS	100.0	125.0	160.0	200.0	-	70.0	42.0	85.0	7.0	29.0	50.0
MC224SS	160.0	200.0	-	-	-	100.0	60.0	120.0	10.0	41.0	70.0

Donghua Ketten Nr.	Lichte Weite	Bolzendurchmesser		Bolzenlänge		Laschendicke	Bruchkraft
	b1 min	d2 max	d3 min	L max	Lc max	t/T max	Q min
	mm	mm	mm	mm	mm	mm	kN/lbf
MC28SS	20.0	13.0	8.2	36.0	38.5	3.5	28.0/6364
MC56SS	24.0	15.5	10.2	45.0	47.5	4.0	56.0/12727
MC112SS	32.0	22.0	14.3	62.5	64.3	6.0	112.0/25454
MC224SS	43.0	31.0	20.3	83.0	85.5	8.0	224.0/50909